



MICE

**LA Almazara**

Designed by Philippe Starck.  
The first signature oil mill  
RONDA, Málaga.



# The emblematic architecture of LA Almazara

A monumental artwork by Philippe Starck.

In the heart of the Ronda mountains, LA Almazara stands out as a masterpiece of contemporary design. Its monumental corten steel structure, comprising an iconic red cube, bull's horn and half-olive, reflects a combination of tradition and cutting edge design. More than a simple venue, this space is a source of inspiration for truly extraordinary events.





# LA Almazara

**The first signature oil mill in the world. Ideal for presentations, conferences and congresses. Includes the olive oil museum, auditorium, restaurant, terrace, outdoor viewing points and oil mill.**

**LA Almazara | Surface area: 1400m<sup>2</sup> (not including the oil mill). Capacity: 500 pax.**

LA Almazara combines avant-garde architecture, innovative design and a profound respect for the natural environment, making it an ideal venue for MICE events. Every inch of this emblematic space has been designed to offer unforgettable experiences that inspire creativity, connection and collaboration.

LA Almazara is like Andalusia:  
austere, rigorous, real,  
exaggerated, extreme, timeless,  
strong, spiritual and passionate.







# Espacio Museo del AOVE

EVOO Oil Museum | Surface area 130 m². Capacity: 66 personas

The museum, a tribute to olive oil and its rich history, is a culturally enriching location which can be incorporated into the widest range of events. Its visual narrative and interactive features provide a unique setting for networking activities or themed events.



# Abbas Ibn Firnas Hall

Surface area: 150 m². Capacity: 80 personas

Inspired by the legacy of the renowned inventor and pioneer of aviation, the Abbas Ibn Firnas Hall is an outstanding space which evokes innovation and vision for the future. Its design, which plays with light and a range of different materials to create a uniquely enveloping atmosphere, makes this the perfect venue for strategy meetings, executive presentations or private gatherings.





## Main Floor, Restaurant and Cocktail Bar

Surface Area: 720 m². Capacity: 250 personas

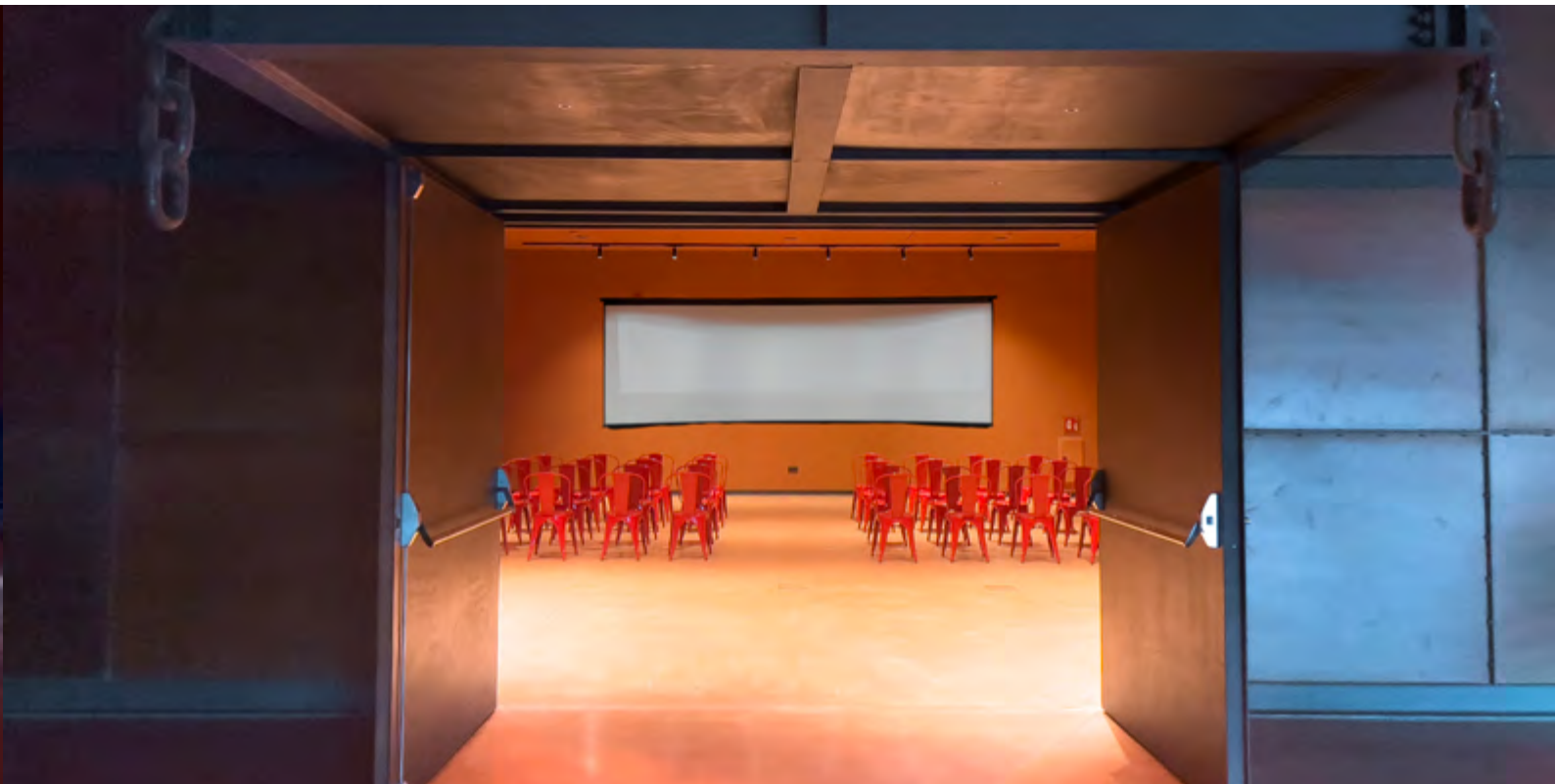
The main floor of LA Almazara is a multi-purpose space which stands out for its contemporary design and attractive dimensions. This area can be adapted to different formats and requirements, making it the perfect option for conferences, presentations, receptions and events. On the main floor of LA Almazara you'll find an exclusive restaurant, a fully equipped kitchen for culinary events and a cocktail bar for enjoying unique experiences.



## Auditorio

Surface Area: 150 m². Capacity: 80 personas

The auditorium at LA Almazara is a versatile space designed for conferences, presentations and cultural events. With exceptional acoustics, it provides a unique setting where tradition and innovation coincide. Equipped with the very latest technology, this auditorium is the perfect venue to immerse oneself in a sensorial experience at the heart of LA Almazara.





## Terrace

Surface area: 156 m<sup>2</sup>. Capacity: 75 personas

From the terrace, guests can enjoy stunning views across the Serranía de Ronda. This is a versatile space, which can accommodate a range of events from exclusive cocktail receptions through to lunches, dinners or team building sessions in a relaxed and sophisticated atmosphere.





# Kitchen Garden Viewing Point

Surface area: 900 m². Capacity: 250 personas

This viewing point offers guests unrivalled views of the natural surroundings. It's a versatile space adaptable to all kinds of events, from picnics, lunches or dinners to cocktail receptions or wine tastings in a relaxed and sophisticated setting.



# The Legionnaire's Viewing Point

Surface area: : 500 m². Capacity: 80 personas

A location infused with character and history, the Legionnaire's Terrace offers spectacular views of the olive groves and Serranía de Ronda. Its elegant, countryside atmosphere makes this the ideal spot for private events, outdoor wine tastings and exclusive dinners beneath the stars.





# Grazalema Viewing Point

Surface area: : 150 m². Capacity: 25 personas

With stunning views towards the majestic Sierra de Grazalema, this terrace is a vantage point from which to enjoy the Andalusian horizon. Its elevated position makes it the perfect location for sunset cocktails, meeting and inspiring encounters in a uniquely beautiful setting.



# The Holm Oak Wood

Surface area: : 50 m². Capacity: 12 personas

Within a lush enclave of age-old oaks, the Holm Oak Wood is a serene and welcoming space in which to enjoy a picnic immersed in nature. The cool shade and calm surroundings make this the ideal getaway spot to switch off and enjoy a meal in the open air.





## Oil Mill - Industrial Area

Surface area: : 430 m<sup>2</sup>. Capacity: 50 personas

At the heart of LA Almazara, the Mill and industrial space represent the fusion of age-old tradition and cutting edge technology in the production of extra virgin olive oil. This is where the extraction process takes place, turning freshly harvested olives into liquid gold. Equipped with the very latest machinery, the mill's design also respects the essence of olive oil tradition.\*

\* Available for events except during harvest (October/January)

**Cutting edge technology to obtain the best possible quality in our organic EVO oils. A unique space with outstanding architectural features which fuse tradition and innovation.**





# LA Almazara Car Park

An outdoor exhibition venue for large-scale events.  
Exhibitions, concerts, fairs.

Surface area: : 3.000 m².

This is not just a car park but a multi-purpose exhibition space designed for large-scale events. Its surface area makes it the ideal location for welcoming large groups, while at the same time maintaining the natural environment and exclusive character of our estate.

With capacity for over 1,000 guests, this is a versatile, open-air venue in an unrivalled setting, ideal for the most spectacular celebrations and events.





# Cortijo LA Almazara

**Tradition and exclusivity. A location where the essence of Andalusia meets luxury and privacy, creating the perfect environment for unique corporate events.**

**Cortijo LA Almazara | Surface area: Total: 1000 m². Capacity: 200 personas**

Set in an age-old olive grove, the LA Organic Estate House blends the traditional charm of Andalusian architecture with the comfort and sophistication of contemporary design. With a cosy, exclusive atmosphere, this venue is ideal for MICE events seeking inspiration, a chance to switch off and unforgettable experiences in an authentic, natural setting.





# Living/Working Areas

Surface area: : 200 m². Capacity: 50 personas

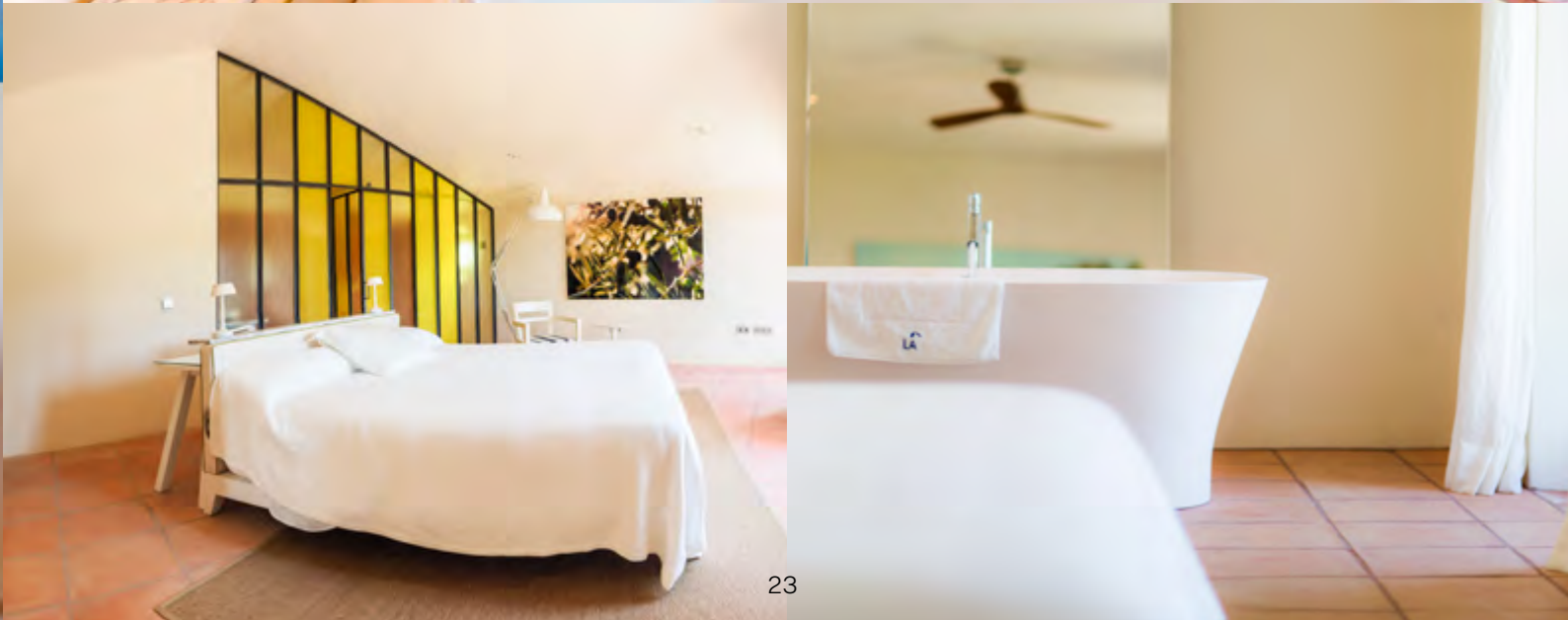
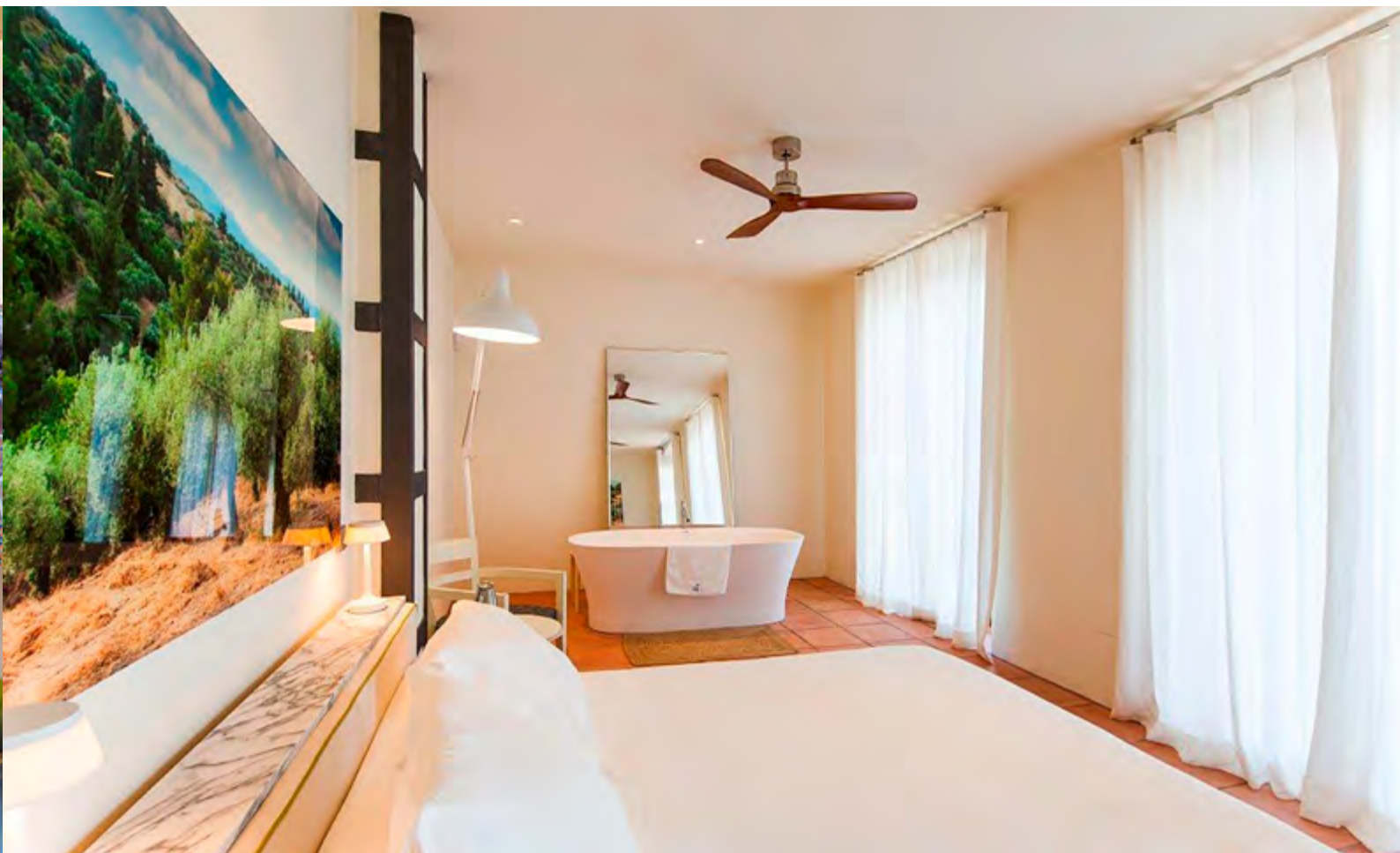
The Estate House living areas, with their carefully selected furnishings, artworks and design features in wood, stone or warm textiles, provide a cosy and elegant environment for strategy meetings, brainstorming sessions or private presentations. The natural light, sounds of the countryside and easy access to outdoor areas makes this an ideal setting for creativity and concentration.



# Bedrooms

Surface area: : Entre 45 - 55 m². Capacity: 2 personas

The Estate House has a number of bedrooms, each exclusively designed with its own unique character, where guests can enjoy an unrivalled experience of rest and relaxation. The combination of fine materials, natural textiles and uninterrupted views across the olive groves makes for an atmosphere of calm luxury and guarantees the most pleasurable stay.





## Terraces and Gardens

Surface area: : 500 m<sup>2</sup>. Capacity: 200 personas

The Estate House's main garden and terrace provide the perfect setting for cocktail receptions, private dinners or networking opportunities in the open air. Surrounded by nature and with views to the Andalusian countryside, these spaces enable guests to enjoy the essence of LA Almazara in a relaxed yet exclusive setting.



**A 26-hectare getaway offering the perfect blend of design and comfort, ideal for a tranquil yet sophisticated break.**





# Greenhouse LA Almazara

**Bathed in natural light and surrounded by greenery, the Greenhouse is perfect for receptions, lunches, workshops or meetings in the open air.**

**Greenhouse |** Surface area: : 500 m<sup>2</sup>. Capacity: 200 personas

Set in an age-old olive grove, the LA Organic Estate House blends the traditional charm of Andalusian architecture with the comfort and sophistication of contemporary design. With a cosy, exclusive atmosphere, this venue is ideal for MICE events seeking inspiration, a chance to switch off and unforgettable experiences in an authentic, natural setting.





## Interiors

Surface area: : 500 m². Capacity: 200 personas

As the Greenhouse is built with translucent panels, the large interiors are bathed in natural light and directly connected with the natural surroundings. These areas are ideal for corporate meetings, presentations and private lunches and are fully adaptable to each event's requirements.



## Terraces and Garden

Surface area: Total: 300 m². Capacity: 200 personas

Outdoor terraces with unrivalled views across the olive groves and gardens to the Serranía de Ronda. The perfect location for open-air cocktail receptions, networking events or team building in a relaxed and exclusive atmosphere.











**LA Almazara is like Andalusia:  
austere, rigorous, real,  
exaggerated, extreme,  
timeless, strong, spiritual and  
passionate.**

Philippe Starck





[www.almazaralaorganic.com](http://www.almazaralaorganic.com)